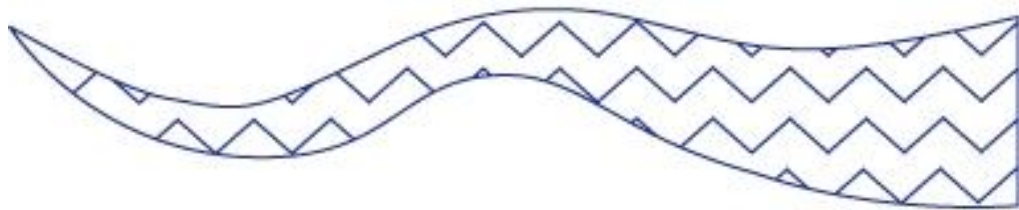


HUMBER



Management Scheme

ANNUAL REPORT 2005

CONTENTS

1.	ACKNOWLEDGMENTS	3
2.	LAUNCH OF THE HUMBER MANAGEMENT SCHEME	3
3.	PROMOTION	4
3..1	Media Coverage	4
3..2	Lincolnshire Environmental Awards	4
3..3	Talks	4
3..4	Web Site	4
3..5	Codes of Conduct	4
3..6	Ebb & Flow	5
4.	MANAGEMENT SCHEME REVIEW	5
4..1	Humber Management Scheme Review Process	5
4..2	Revisions to the Management Scheme	5
4..3	Codes of Conduct	6
4..4	Action Plan	6
4..5	Fisheries - Annex A	7
4..6	Flood Defence & Land Drainage - Annex B	12
4..7	Water Resources - Annex C	17
4..8	Water Quality - Annex D	19
4..9	High Tide Roosts – Annex E	26
4..10	Saltmarsh Management – Annex F	29
4..11	Recreation & Tourism Annex G	31
4..12	Science & Education – Annex H	41
4..13	Shipping & Navigation – Annex I	43
4..14	Ministry of Defence - Annex J	47
5.	CONDITION & COMPLIANCE MONITORING	56
5..1	Condition Monitoring	56
6.	OPERATIONAL ISSUES	56
6..1	Signage	56
6..2	Conservation Objectives	57
6..3	Humber Estuary Relevant Authorities Group (HERAG)	57
6..4	HERAG Changes in Membership	57
6..5	HERAG Meetings and Programme of Work	58
6..6	HERAG Terms of Reference - revision	58
6..7	Humber Estuary Relevant Authorities Working Group (WG)	59
6..8	WG Changes in Membership	59
6..9	WG Meetings and Programme of Work	59
6..10	Humber Advisory Group (HAG)	60
6..11	HAG Changes in Membership	60
6..12	HAG Meetings and Programme of Work	60
7.	FINANCE AND OPERATION	61
7..1	Financial Report	61
7..2	Review of Contributions	61
8.	References	61

INTRODUCTION

After four years in preparation the Humber Management Scheme was formally launched in 2005. The Action Plan developed during the schemes formation was being delivered well before the launch, building on the considerable work already in place to secure a viable future for Humber European marine sites' wildlife, in parallel with the national economic importance of the Humber's trade. This report documents the work undertaken during 2005, in implementation of the Humber Management Scheme.

1. ACKNOWLEDGMENTS

Members of the Humber Estuary Relevant Authorities Group and the Humber Advisory Group who have contributed so much to the Management Schemes' development and effective implementation. The Deep in Hull, for hosting the launch in their Submarium and Elliot Morley MP Minister of State (Climate Change and Environment) for providing the keynote speech.

2. LAUNCH OF THE HUMBER MANAGEMENT SCHEME

The launch was originally planned for early 2005, Elliot Morley MP (Minister for Environment & Agri-Environment - at that time) was to attend on 4th March. Due to unfortunate circumstances the Minister had to cancel at short notice and attempts to organise a replacement failed. It was decided to postpone the launch until after the general election.

The reconvened launch was on 1st July, at The Deep in Hull. Elliot Morley, now Minister of State (Climate Change and Environment) was guest of honour and delivered the keynote speech. Over 50 guests attended, representing both Relevant Authorities and the Humber Advisory Group. The event started with an integrated presentation on the Humber's wildlife and industrial importance, the development of the Humber Management Scheme and the roles of the Humber Estuary Relevant Authorities Group and Humber Advisory Group. This introduction was delivered by a team representing both the 34 members of Humber Estuary's Relevant Authority Group and the Humber Advisory Group.

The main focus of the evening was Elliot Morley's speech. The Minister is a keen ornithologist with an intimate knowledge of the Humber, who told us that he had taken a particular interest in the Management Scheme's development. Elliot Morley, thanked both the Relevant Authorities and the Humber Advisory Group for the production of the Management Scheme, noting the unprecedented level of cooperation involved in the schemes development.

Elliot Morley is the Minister responsible for floods and coastal defence and noted the critical link between the Humber Management Scheme and the Environment Agency strategic approach to flood management including the detailed hydrological and geomorphological studies. This work, includes the managed realignments such as those at Paull Holmes Strays and Alkborough that both ensures the maintenance of flood protection standards and allows space for the creation of intertidal habitats lost due to coastal squeeze.

3. PROMOTION

3.1 Media Coverage

The launch was covered on the 1st July by; BBC News, Grimsby and Scunthorpe Evening Telegraphs.

The Royal Society for the Protection Birds in a press release on 27th July “Success for Avocets on Humber Island” promoted the Codes of Conduct’s advice in preventing disturbance to the estuary’s important wildlife.

A picture of the launch with Elliott Morley was included in the BCU Newsletter for Autumn 2005. The Business Co-ordination Unit is part of Regional Co-ordination Unit in the Office of the Deputy Prime Minister.

The launch and office move were featured in Humber Vision No 3, the newsletter of the Humber Industry Nature Conservation Association.

3.2 Lincolnshire Environmental Awards

The Humber Management Scheme’s entry in the 2005 award received a special certificate of commendation.

3.3 Talks

Lincolnshire Naturalists Union, 26th March, “The Humber Estuary formation, function and wildlife”.

The talk was later published in their journal “Transactions” volume 27 part 2, 2005. www.lnu.org/transactions.php

3.4 Web Site

The web site was regularly updated during the year and proved a popular resource with 6,621¹ unique visitors during the year, the estimated time visitors spent reading the site is 510² hours.

3.5 Codes of Conduct

The Codes of Conduct were developed by the Humber Advisory Group and described by Elliot Morley as “*critical to the Schemes implementation*”. They provide advice on issues such as: safety, angling, recreation, walking and wildfowling and are designed to allow people to continue to enjoy these particular activities while minimising any adverse effects. A brief introduction to the European Marine Site and Humber Management Scheme is included within the Codes.

¹ This is the number of individual computers visiting the site each month multiplied by 12.

² Monthly average time spent on the site multiplied by the annual total of unique visitors

Distribution of the Codes was undertaken by the Local Authority's Library and Tourist Information Services, the Humber Advisory Group, English Nature and the Lincolnshire and Yorkshire Wildlife Trusts together with copies included with Ebb & Flow. Twenty-five thousand copies were produced, with approximately fifteen-thousand distributed in 2005.

3..6 Ebb & Flow

Following the launch an issue was produced in August 2005. The lead articles were the launch of the Humber Management Scheme and the production of the Codes of Conduct, it also featured reports on:

- Far Ings designation as a National Nature Reserve
- The Humber's confirmation as England's 3rd biggest wildlife site
- Humber Estuary Low Tide Count
- December's Oil Spill
- Lighting the Humber Bridge
- Retirements of HERAG personnel
- Stallingborough Power Station
- Water's Edge Country Park

Help with distribution was provided by the Environment Agency and English Nature who both keep current mailing lists, 2,200 copies were printed and distributed.

4. MANAGEMENT SCHEME REVIEW

4.1 Humber Management Scheme Review Process

Initial work started in July with an interim review. This was a preliminary to the annual review and served to remind the lead authors of their obligations and recruit/brief new staff where changes had occurred. This initial review served to refocus everyone on the work required to deliver the Humber Management Scheme and provided an assessment of the amount of work required during implementation for both the Relevant Authorities and HMS staff.

4.2 Revisions to the Management Scheme

Page v	Number of Relevant Authorities changed to 34. Contact details changed to: Waters' Edge Visitors Centre, Maltkiln Road, Barton upon Humber, North Lincolnshire, DN18 5JR Tel: 01652 631520 Fax 01652 631524
Page 5	Text Box, Relevant Authorities for the Humber Estuary European marine site, Humber Properties Ltd and Winestead Internal Drainage Board removed.
Page 6	Number of Relevant Authorities changed to 34
Page 25	Table 6.1 "Assessment of Activity and the Management Options" should be Table 6.3.
Issue date	Change to January 2006.

The Action Plans are reviewed alongside the Management Scheme. See 8.7 full details of the work undertaken in 2005.

4.3 Codes of Conduct

The production of the Codes of Conduct by the Humber Advisory Group covered the following Management Actions:

- A1/ Angling
- A3/ Cockle gathering
- F2/ Plant gathering
- F5/ Access
- G1/ Angling
- G2/ Airborne recreation
- G3/ Bait digging
- G7/ Dog walking
- G8/ Horse riding
- G10/ Motorised access to foreshores
- G11/ Motorised recreation on the foreshores
- G12/ Personal Water Craft
- G13/ Samphire collection
- G15/ Walking
- G16/ Wildfowling
- H16/ Fields trips – universities/schools
- H17/ Guided walks and activities

The codes were well received and widely distributed around the European Marine Site attracting many favourable comments. The success of the codes is a more subjective assessment, this will include; the effectiveness of the content, distribution system and their application by site users. Integral with the Codes is site signage, for a project for funding will be developed during 2006.

4.4 Action Plan

The Action Plans are reviewed alongside the Management Scheme. The following section details the work undertaken during 2005.

4.5 Fisheries - Annex A

Lead Author: North East Sea Fisheries Committee - Giles Bartlett, Environmental Officer.

Activity & Proposed management actions	Progress during 2005	Future timetable	Review of Management Action/Timescale etc.
<p>A1/ Angling</p> <p>Code of Conduct and intertidal netting review (Consultation with local & National Angling Clubs/Associations, regarding best practice review).</p>	<p>Produced by NESFC. The code includes best practice on; Shellfish Collection, Bait Digging & Collection, Intertidal Netting, Potting, Trot Lines & Push Nets and Shore Angling. http://erycdata.eastriding.gov.uk/pls/portal30/docs/FOLDER/NESEAFISH/NESFDOCS/CODE+OF+CONDUCT_GB.PDF</p>	<p>The current document is a 3 sided word processed document, t is intended to produce an improved glossy version in 2006.</p>	<p>Partially complete, a glossy version needs to be produced and distributed.</p>
<p>A2/ Long-lining for skate and cod</p> <p>Monitor</p>	<p>Monitoring continued from shore/patrol vessel(s) inspections, GIS is used for analysis.</p>	<p>Continued to monitor.</p>	<p>Biannually.</p>

Activity & Proposed management actions	Progress during 2005	Future timetable	Review of Management Action/Timescale etc.
<p>A3/ Cockle gathering</p> <p>Implement new Byelaw (Confirmed 6th February 2003) including improved technical and seasonal control measures.</p> <p>Code of Conduct re: access routes</p> <p>Regulating Order Examine opportunities for an order to limit fishing effort. Preliminary consultation February 2003.</p>	<p>Biannual survey programme ongoing. 2004 data analysis completed and soon to be published. Fishery to remain closed until 31st August 2006.</p> <p>Regulating order in progress (subject to legislative change (i.e. Fisheries Agency/Marine Bill)</p>	<p>Continued to monitor.</p> <p>Adaptive management to continue.</p>	<p>Biannually.</p> <p>On hold awaiting legislative change.</p>
<p>A4/ Netting</p> <p>Monitor</p>	<p>As A2</p> <p>NESFC, completed a three-year Bass Netting Study in 2004, the final project report was produced in March 2005. The project identified potential for the development of a small, highly regulated, intertidal fixed net fishery. DEFRA are currently reviewing draft proposals designed to strengthen the management of fixed net sea bass fisheries throughout the Committee's jurisdiction.</p>	<p>Awaiting DEFRA review.</p>	<p>Biannually?</p>

Activity & Proposed management actions	Progress during 2005	Future timetable	Review of Management Action/Timescale etc.
A5/ Potting for crab Monitor	As A2	Continued to monitor.	Biannually.
A6/ Trawling (shrimp) Research Bycatches of lamprey and other species through fleet surveys and practical studies. Examine whether existing legislation is strong enough to manage fishery and sub-feature. Examine possibility of local byelaw for separator device and maximum beam size.	Scoping study (desktop/questionnaire) August September 2005. Examine external funding opportunities. Consultation on possible draft byelaw in 2005 public consultation round.	Draft study depending on scoping outcome. Byelaw by end 2006?	Annually. Project August-December 2006?
A7/ Trawling (sole) Monitor	As A2 but incorporate in A6 if necessary.	Annually.	
A8/ Bait Digging	(Annex G3)		

Activity & Proposed management actions	Progress during 2005	Future timetable	Review of Management Action/Timescale etc.
<p>A9/ Salmon & sea trout angling</p> <p>Monitor migratory species populations and actions restocking (EA).</p> <p>Review of intertidal netting & enabling byelaw.</p>	<p>3-year study on Holderness coast completed in 2005.</p> <p>District wide byelaw is with DEFRA. Subject to national policy initiatives.</p>	<p>Annually.</p> <p>Implement when byelaw confirmed.</p>	<p>Annually.</p> <p>Annually.</p>
<p>A10/ Eel trapping</p> <p>Assessment of Eel trapping under the Habitats Regulations 48-53.</p>	<p>Ongoing.</p>		
<p>A11/ Fish impingement (Annex C1)</p> <p>Develop prioritised programme for reducing obstructions to the movement of fish to and from watercourses around the site. The first passes were operational in 2004.</p>	<p>See Annex B no 2.</p>		

Activity & Proposed management actions	Progress during 2005	Future timetable	Review of Management Action/Timescale etc.
<p>A11/ Fish impingement (continued)</p> <p>Ongoing discussion between NESFC, Environment Agency and English Nature, and review of abstraction licences under Regulation 50</p> <p>Implement Habitats Regulations (review of consents - abstraction licence).</p>	See Annex C no 1.		
<p>A12/ Barriers to fish movement</p>	(Annex B2)		

4.6 Flood Defence & Land Drainage - Annex B

Lead Author: Environment Agency – Philip Winn.

Activity & Proposed management actions	Progress during 2005	Future timetable	Review of Management Action/Timescale etc.
<p>B1/ Capital schemes</p> <p>Development of HESMP and CHaMP provides a sustainable long-term management strategy for flood defence investment.</p> <p>Assessment of schemes under the Habitats Regulations 48-53.</p>	<p>The “Humber Flood Risk Management Strategy” consultation document was published in August 2005, public consultation ended on 11th November.</p> <p>Appropriate assessments will take place as individual Schemes are considered. A shadow appropriate assessment of the strategy is supported by English Nature.</p>	<p>Adoption by the Environment Agency’s board, Defra and treasury approval is anticipated during 2006.</p> <p>As individual schemes are submitted for approval.</p>	<p>To be implemented /reviewed as approvals are gained and funding released.</p>
<p>B2/ Barriers to fish passage</p> <p>Strategy being developed to provide fish passes including when undertaking capital works related to a barrier.</p>	<p>Monitoring of newly installed fish pass at Paull Holmes Strays is being undertaken to inform future design.</p> <p>Environment Agency surveys on the numbers of parr (juvenile salmon) on the River Ure, upstream of the River Ouse, have shown yearly increases, with numbers doubling in 2005.</p>	<p>Fish passes will be incorporated into future building/refurbishment works.</p>	<p>As B1.</p>

Activity & Proposed management actions	Progress during 2005	Future timetable	Review of Management Action/Timescale etc.
<p>B3/ Discharge of surface water from: Pumping stations, Clough doors and flap valves</p> <p>Review current regime when monitoring information becomes available.</p> <p>Monitor impact at outfalls such as Easington at high drainage periods.</p>	<p>See B1, adoption of the “Humber Flood Risk Management Strategy” will determine the programme of works on the estuary, and inform all aspects of work.</p>	<p>As B1.</p>	<p>As B1.</p>
<p>B4/ Maintenance Desilting of outfalls</p> <p>Review current regime when monitoring information becomes available</p> <p>Monitor impact at outfalls, particularly the effects on saltmarsh habitat, where “hold back and flush” regime used.</p>	<p>See B1.</p>		

Activity & Proposed management actions	Progress during 2005	Future timetable	Review of Management Action/Timescale etc.
<p>B5/ Maintenance Grass cutting and vegetation management</p> <p>Development of the annual maintenance programmes and formal discussions with English Nature are continuing.</p>	<p>A 5 year programme of approvals was agreed with English Nature during 2005.</p>	<p>Review during 2010.</p>	<p>Review during 2010.</p>
<p>B6/ Maintenance Stoning</p> <p>Development of the stoning strategy is continuing, Habitats Regulations 48-53.</p> <p>Draw up programme of works.</p>	<p>Development of the strategy will be completed as apart of the Humber Flood Risk Management Strategy”.</p> <p>As above.</p>		

Activity & Proposed management actions	Progress during 2005	Future timetable	Review of Management Action/Timescale etc.
<p>B7/ Maintenance Repairs to banks and other structures</p> <p>Surveillance of the continuing regime – i.e., carry out repairs as required, particularly after floods and minimise and mitigate against impacts.</p> <p>Consult with English Nature prior to works unless impractical during an emergency.</p>	<p>See B1, adoption of the “Humber Flood Risk Management Strategy” will determine the programme of works on the estuary, and inform all aspects of work.</p> <p>EN has been consulted on the “Humber Flood Risk Management Strategy” they support the proposed “overall strategy”. Individual schemes are likely to require appropriate assessments as they progress to the implementation stages.</p>	<p>See B1.</p>	
<p>B8/ Maintenance Removal of rubbish and obstructions</p> <p>Surveillance of the continuing regime. Carry out removal disposal of rubbish as required, particularly after floods and minimise and mitigate against impacts.</p>	<p>Undertaken as needed during 2005.</p>	<p>Ongoing.</p>	

Activity & Proposed management actions	Progress during 2005	Future timetable	Review of Management Action/Timescale etc.
<p>B8/ Maintenance Removal of rubbish and obstructions (continued)</p> <p>Monitor areas where visual and noise impact may be high.</p>	<p>No high impact sites identified.</p>	<p>Ongoing.</p>	
<p>B9/ Maintenance Vermin control</p> <p>Surveillance of the continuing management.</p>	<p>Undertaken as needed during 2005.</p>	<p>Ongoing.</p>	
<p>B10/ Monitoring and surveying</p>	<p>(Annex H)</p>		
<p>B11/ Operation of River Hull Tidal Surge Barrier and flood gates</p> <p>Surveillance of the existing management</p>	<p>Modifications to the barrier's operating systems were completed that will enable more reliable operation.</p>	<p>Ongoing.</p>	

4.7 Water Resources - Annex C

Lead Author: Environment Agency – Philip Winn.

Activity & Proposed management actions	Progress during 2005	Future timetable	Review of Management Action/Timescale etc.
<p>C1/ Abstraction of Water (Annex A11)</p> <p>New or Varied Abstractions</p> <p>Determine licences for abstractions under Water Resources Act 1991 and the Habitats Regulations 1994. Undertake appropriate assessment where there could be significant impact on site and set conditions to protect uses including for quality and nature conservation.</p>	<p>Licences are determined in accordance with legislation as they are received.</p>		

Activity & Proposed management actions	Progress during 2005	Future timetable	Review of Management Action/Timescale etc.
<p>C1/ Abstraction of Water (continued)</p> <p>Existing Abstractions</p> <p>Review existing licences for abstractions under Water Resources Act 1991 and the Habitats Regulations 1994, which may lead to variations in permit conditions where significant impact occurs.</p>	<p>Since 2001 work has been ongoing to produce Catchment Abstraction Management Strategies that will inform decisions. Current “permanent” abstraction licences are being changed to “time-limited licences” (normally 12 years). This is consistent with the six-year review cycles that are required for River Basin Management Plans under the Water Framework Directive.</p> <p>Three tests are applied to all renewals:</p> <ul style="list-style-type: none"> • Continued environmental sustainability • Demonstration of continued justification of need • Efficient use of water. 	<p>All consents should be reviewed by March 2006.</p>	<p>Review in 2006.</p>
<p>C2/ Monitoring of abstractions</p> <p>Monitor to ensure water not being extracted illegally</p> <p>Illegal Abstraction (including breaches of licence conditions)</p> <p>Enforcement in line with legislation</p>	<p>(Annex H)</p> <p>Monitoring of abstractions and enforcement continue inline with current policy.</p> <p>As above.</p>		

4.8 Water Quality - Annex D

Lead Author: Environment Agency – Philip Winn.

Activity & Proposed management actions	Progress during 2005	Future timetable	Review of Management Action/Timescale etc.
<p>D1/ Effluent Discharges & Atmospheric Emissions from Prescribed Processes</p> <p>Determine permits under Environmental Protection Act 1990, Water Resources Act 1991, Pollution Prevention and Control Act 1999, Habitats Regs. Undertake appropriate assessment where there could be significant impact on site. Set conditions to protect uses including for quality and nature conservation.</p>	<p>Permits are determined in accordance with legislation as they are received.</p>		

Activity & Proposed management actions	Progress during 2005	Future timetable	Review of Management Action/Timescale etc.
<p>D1/ Effluent Discharges & Atmospheric Emissions from Prescribed Processes (continued)</p> <p>Enforcement of permit conditions in line with legislation and prosecution policy.</p> <p>Review permit conditions where significant impact occurs (Reg. 50 of Habitats Regulations - Applications for new or to vary existing permits, Existing permits, Breaches of permit)</p>	<p>Enforcement continues inline with current policy.</p> <p>Following a screening process assessment of consents is continuing.</p>	<p>All consents should be reviewed by March 2006.</p>	<p>Review in 2006.</p>
<p>D2/ Outfall maintenance</p> <p>Surveillance of the continuing management.</p>	<p>See B1, this will determine future management</p>	<p>As B1.</p>	

Activity & Proposed management actions	Progress during 2005	Future timetable	Review of Management Action/Timescale etc.
<p>D3/ Agricultural runoff from rivers</p> <p>Implement pollution control powers to reduce the risk of pollution and spillages of agro-chemicals/wastes including measures on storage of silage, slurries, oil and chemicals, promotion of good agricultural practice, influence land use management.</p> <p>Enforce the extension of Nitrate Vulnerable Zones over much of Humber catchment.</p>	<p>The Catchment Sensitive Farming Delivery Initiative was launched in December 2005. The aim over 2 years is to encourage catchment sensitive farming that keeps diffuse pollutants to levels that are consistent with the ecological sensitivity. It includes limiting the use of fertilisers, manures and pesticides; promoting good soil structure, protecting watercourses from faecal contamination, sediment and pesticides.</p> <p>As above.</p>	<p>Assess in 2007 as project concludes.</p>	<p>Assess in 2007 as project concludes.</p>
<p>D4/ Leaching from Contaminated land</p> <p>Identify “special sites” (i.e., those which could affect the Humber) and gain remediation (e.g., as at Waters’ Edge, Barton).</p>	<p>Water’s edge project completed in 2004. No other sites are currently undergoing work.</p>		

Activity & Proposed management actions	Progress during 2005	Future timetable	Review of Management Action/Timescale etc.
<p>D5/ Clean up of contaminated land</p> <p>Apply Habitats Regulations 48-53.</p>	<p>Following a screening process assessment of consents is continuing.</p>	<p>All consents should be reviewed by March 2006.</p>	<p>Review in 2006.</p>
<p>D6/ Mobilisation of contaminated sediments</p> <p>Assess significance and determine whether there is any practical intervention.</p>	<p>Monitoring of contaminants is undertaken by CEFAS on behalf of DEFRA. Samples are taken on a 3 year cycle.</p>		
<p>D7/ Dredging*</p>	<p>(See Annex I10/15)</p>		
<p>D8/ Waste Management Licensed Operations</p> <p>Review existing licences (Reg 50) and determine new application under Habitat Regs.</p>	<p>Following a screening process assessment of consents is continuing.</p>	<p>All consents should be reviewed by March 2006.</p>	<p>Review in 2006.</p>

Activity & Proposed management actions	Progress during 2005	Future timetable	Review of Management Action/Timescale etc.
<p>D9/ Waste Management Illegal waste disposal</p> <p>Enforcement action against flytipping and gain removal of waste, identify hotspots.</p>	<p>Enforcement continues in line with policies.</p>		
<p>D10/ Leaching of anti-fouling paint</p> <p>Enforce international legislation banning application of products with TBT.</p> <p>Enforce international legislation requiring that no TBT to be found on hulls.</p>	<p>No known use of TBT has occurred.</p> <p>As above.</p>		
<p>D11/ Oil and Chemical spillages from vessels and harbour installations</p>	<p>(Annex II)</p>		

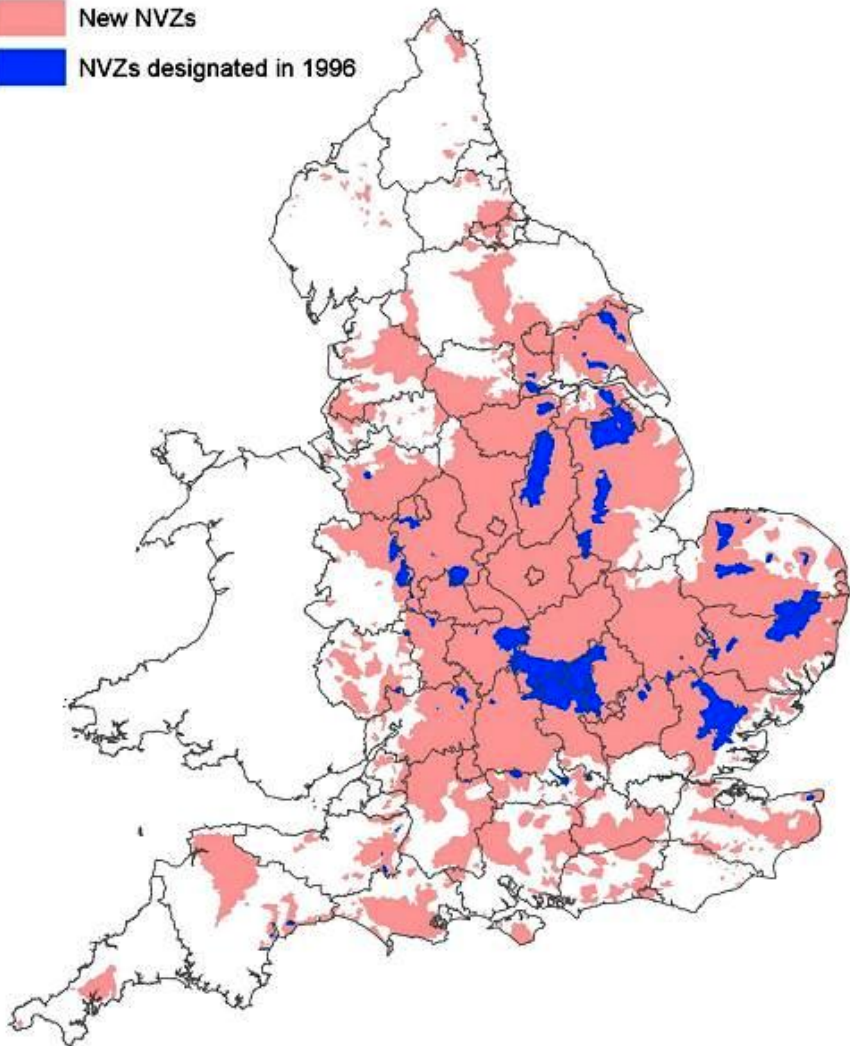
Activity & Proposed management actions	Progress during 2005	Future timetable	Review of Management Action/Timescale etc.
<p>D12/ Spillages/leakages/ deliberate pollution (other than from ships)</p> <p>Enforcement of pollution prevention and enforcement powers and conditions on planning consents for bunding, storage, sustainable urban drainage systems, etc.</p> <p>Promotion/education on good practice, waste minimisation, environmental management systems, etc.</p>	<p>Enforcement continued during 2005.</p>		
<p>D13/ Monitoring and surveys</p>	<p>(Annex H)</p>		

Nitrate Vulnerable Zones - in total of 55% of England.



NITRATE VULNERABLE ZONES IN ENGLAND

- New NVZs
- NVZs designated in 1996



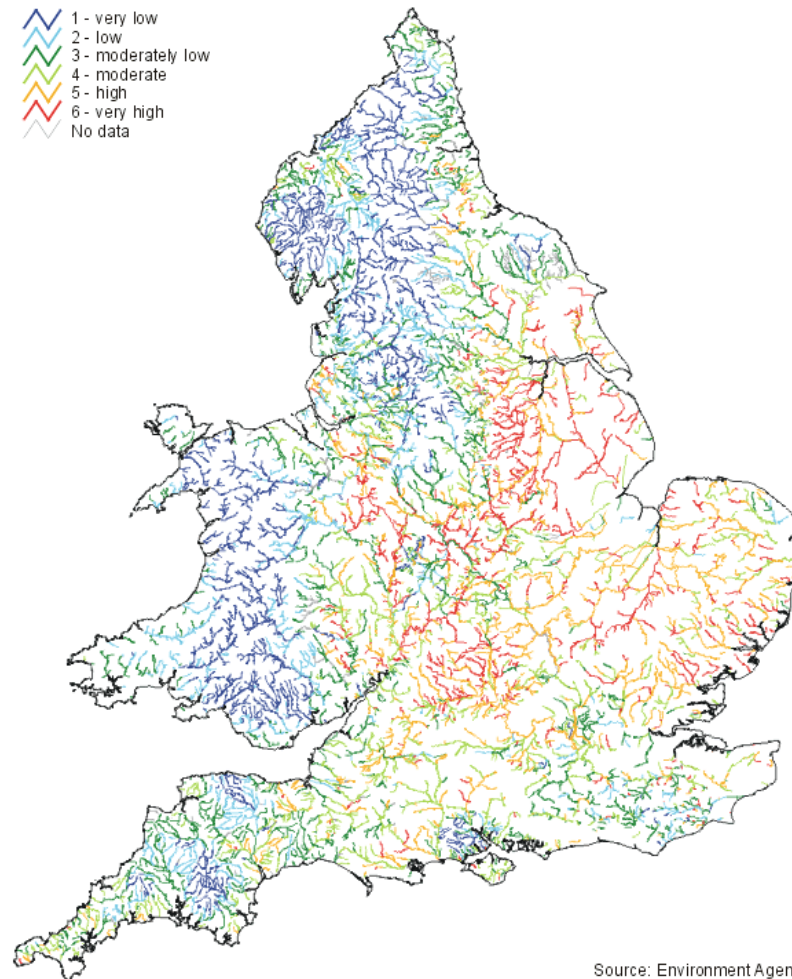
Nitrate in Rivers, 2003

The 1996 designations:

Dark blue, 170kg/ha

Pink, 210kg/ha total, reducing to 170kg/ha from 19 December 2006.

- 1 - very low
- 2 - low
- 3 - moderately low
- 4 - moderate
- 5 - high
- 6 - very high
- No data



Source: Environment Agency

4.9 High Tide Roosts – Annex E

Lead Author: Emma Hawthorne - English Nature

Activity & Proposed management actions	Progress during 2005	Future timetable	Review of Management Action/Timescale etc.
<p>E1/ Changes in land use and/or vegetation type</p> <p>Monitor and review high tide roosts around the Humber.</p> <p>Promote the development of further high tide roosts on the estuary. (The EA's Shoreline Management Plan may help to deliver on this).</p>	<p>WeBS counts have continued with The Humber Estuary Low Tide Count Programme 2003-2004, published in March 2005 (English Nature Research Report No 656). A contract for appropriate survey of the South Humber Bank is been financed, with work starting in 2006.</p> <p>The Humber Wildfowling analysis includes a contact to:</p> <ul style="list-style-type: none"> • identify and map important high tide roosts • identify and map important refuge areas • identify and map other important areas, such as key arable fields, other areas used regularly by the estuary birds <p>Promoted need to separate out data for high tide roosts from main WeBS data with local bird recorders</p>	<p>2005/6.</p> <p>Continued promotion of this issue with local birders – event for this group planned for 2005/06.</p>	<p>Assess report and the need for further action/research.</p>

Activity & Proposed management actions	Progress during 2005	Future timetable	Review of Management Action/Timescale etc.
<p>Promote the take-up of Countryside Stewardship Schemes on SSSIs via or English Nature Management Agreements.</p> <p>Monitor bird numbers landward of the sea wall via revised WeBS counts to provide separate data for the HEEMS and the terrestrial habitat.</p> <p>Develop and implement Biodiversity Action Plan targets for creating coastal grazing marsh and other relevant habitats.</p> <p>Review the need for a buffer zone between the estuary and industrial development where appropriate.</p> <p>Application of the Habitats Regulations for future developments</p>	<p>The Managed Realignment site at Alkborough was progressed during 2005 with plans for the creation of a variety of habitats. The “Humber Flood Risk Management Strategy “was published in August 2005, this will determine future realignment work and the creation of flood storage areas. The need</p> <p>The Countryside Stewardship Scheme is now closed to new applicants. Since August 2005 the Environmental Stewardship scheme that is expected to encompass 60% of all farmland within 2 years. See note below.</p> <p>EN have an ongoing management agreement with one owner/ occupier to include arable reversion and grazing on the Humber bank.</p> <p>Promotion of appropriate monitoring wherever possible (eg in relation to South Humber Bank master Planning Project) for a buffer zone between the estuary and industrial development, North Lincolnshire Council attempting to secure suitable funding.</p> <p>All developments. are considered under the Habitats Regulations developments.</p>	<p>Ongoing.</p> <p>Ongoing.</p> <p>Ongoing.</p> <p>Ongoing.</p>	<p>Assess uptake as Natural England is formed and closer working of the 3 organisations occurs.</p>

Activity & Proposed management actions	Progress during 2005	Future timetable	Review of Management Action/Timescale etc.
Develop and implement Biodiversity Action Plan targets for creating coastal grazing marsh and other relevant habitats.	The Hull Biodiversity Partnership was published in 2002. East Riding of Yorkshire Council are planning to produce a BAP. The Lincolnshire BAP is under review. The partly completed Humber BAP is not being developed.		

Environmental Stewardship was launched in March 2005 and has 3 elements.

- Entry Level Stewardship (ELS) - Offers£30 per hectare for simple and effective land management
-
- Organic Entry Level Stewardship (OELS) - Offers£60 per hectare in recognition of the additional benefits that organic farms entails.
-
- Higher Level Stewardship (HLS) – in addition to the above offer up to the maximum of £750 per hectare, but entry is competitive.

4.10 Saltmarsh Management – Annex F

Lead Author: English Nature - Emma Hawthorne

Activity & Proposed management actions	Progress during 2005	Future timetable	Review of Management Action/Timescale etc.
<p>F1/ Stock grazing</p> <p>Surveillance & promotion of the Countryside Stewardship Schemes to support low-intensity grazing. Also promotion and support of revisions to agreements where necessary.</p>	<p>The creation of additional habitat will occur at the Alkborough Managed Realignment Site, work is progressing with the breach anticipated in August/Sep 2006.</p> <p>The Countryside Stewardship Scheme is now closed to new applicants. Since August 2005 the Environmental Stewardship scheme that is expected to encompass 60% of all farmland within 2 years. See note below.</p> <p>Ongoing discussions with an owner-occupier with regard to future modifications to an existing EN management agreement that includes arable reversion and grazing on the Humber bank.</p>	<p>As the breach occurs.</p> <p>Ongoing.</p> <p>Ongoing.</p>	<p>Assess uptake as Natural England is formed and closer working of the 3 organisations occurs.</p>

Activity & Proposed management actions	Progress during 2005	Future timetable	Review of Management Action/Timescale etc.
<p>F2/ Plant gathering (Annex G13)</p> <p>Surveillance Erection of notices on site, explaining the nature conservation importance of the site and information on third party damage.</p> <p>Codes of Conduct Liaise with local police wildlife liaison officer?</p>	<p>HERAG have agreed to erect signs subject to securing suitable funding.</p> <p>No progress.</p>	<p>Ongoing.</p>	
<p>F3/ Reed cutting</p> <p>Surveillance, research and trial management</p>	<p>No progress due to EN staff shortage. Work continues at the RSPB's Blacktoft Sands.</p>		
<p>F4/ Sea defences</p>	<p>(Annex B)</p>		
<p>F5/ Access through Saltmarsh</p> <p>Surveillance, of areas where this is an issue. Monitoring to inform management actions.</p>	<p>Monitoring through ongoing liaison with owners and occupiers etc.</p> <p>EN will be erecting signs where access is causing damage/ disturbance.</p>		

4.11 Recreation & Tourism Annex G

Lead Author: Local Authorities. East Lindsey District Council – Darren O’Toole, East Riding of Yorkshire Council – Tom FitzGerald, Kingston Upon Hall City Council – Jon Capel, Lincolnshire County Council – Alan Freeman, North East Lincolnshire Council – Chris Holliday, North Lincolnshire Council – Andrew Taylor.

Activity & Proposed management actions	Progress during 2005	Future timetable	Review of Management Action/Timescale etc.
<p>G1/Angling</p> <p>Surveillance on an annual basis.</p> <p>Research into the location and dates of competitions through discussions with clubs is continuing.</p> <p>Develop a Code of Conduct/management plan to raise awareness of the impact that angling competitions may have on the interest features and what actions can be taken to reduce these.</p>	<p>The Yorkshire & Lincolnshire Association of Sea Anglers formed during 2005. They aim to enrol participants, retailers and charter boat operators. When fully operational they expect to provide a contact point for all angling activity.</p> <p>North Eastern Sea Fisheries Committee produced the “Intertidal Fisheries Code of Conduct” see Annex A.</p>	<p>Monitor progress and delivery.</p>	<p>Review and asses as more data on angling collected.</p>

Activity & Proposed management actions	Progress during 2005	Future timetable	Review of Management Action/Timescale etc.
<p>G2/ Airborne recreation* (Annex J8)</p> <p>Research into location, intensity and frequency of activity through discussions with organisations including RSPB, HAG, LWT, EN.</p> <p>Develop a Code of Conduct to inform users and ensure they understand what impact they can have on the interest features and what they can do to reduce this.</p>	<p>EN have a briefed a new club formed at North Coates on their responsibilities.</p> <p>A standard warning letter is in use at Donna Nook. The North Norfolk protocol with the Civil Aviation Authority whereby breaches of the W&C Act are listed on the CAA website to highlight the issue to other pilots, may be extended to the Humber.</p>	<p>Continue to monitor and take action when disturbance is noted.</p>	
<p>G3/ Bait digging</p> <p>Surveillance on an annual basis.</p> <p>Research into which locations are being targeted through discussions with local groups and users where they can be identified.</p>	<p>Advice on minimising impact produced in the Codes of Conduct.</p>	<p>Monitor compliance with the Codes of Conduct.</p>	

Activity & Proposed management actions	Progress during 2005	Future timetable	Review of Management Action/Timescale etc.
<p>G3/ Bait digging (continued)</p> <p>Develop Code of Conduct to increase awareness of the impact bait digging can have on the interest features and to encourage traditional methods which mitigate against those impacts.</p> <p>Action for F5 – consider as third party damage.</p>			
<p>G4/ Beach recreation</p> <p>Monitor existing management and review.</p>	<p>North East Lincolnshire Council are drafting a 5 year management plan for their section of the coast.</p> <p>Sandboarding is a new activity, it is like skate boarding without wheels and takes place on sand dunes. Consider how to manage and prevent damage.</p>	<p>Monitor any developments and consider future management.</p>	

Activity & Proposed management actions	Progress during 2005	Future timetable	Review of Management Action/Timescale etc.
<p>G5/ Birdwatching</p> <p>Monitor existing management and review annually.</p>	<p>A bird disturbance monitoring programme was undertaken at Waters' Edge (northern site) during the building works in 2004. It included extended monitoring of waterfowl and waders on the intertidal and the Barton to Barrow Haven clay pits.</p>	<p>Continue monitoring.</p>	
<p>G6/ Cycling</p> <p>Review on an annual basis.</p>	<p>A watching brief is maintained.</p>		
<p>G7/ Dog walking</p> <p>Research to establish which locations need to be looked into in more detail.</p> <p>Develop a Codes of Conduct to increase awareness of the impact dogs may have on the interest features, particularly when not on a lead and what actions owners can take to reduce this.</p>	<p>Waters' Edge Disturbance monitoring, see G5</p>		

Activity & Proposed management actions	Progress during 2005	Future timetable	Review of Management Action/Timescale etc.
<p>G7/ Dog walking (continued)</p> <p>Develop better demarcation of restricted areas and provision of dog walking areas outside the site – ensure these are suited to the areas through liaison with all stakeholders.</p>			
<p>G8/ Horse riding</p> <p>Monitor existing management and review annually.</p>	<p>Waters' Edge Disturbance monitoring, see G5</p>	<p>Continue monitoring.</p>	
<p>G9/ Motor cruising</p> <p>Monitor existing management and review annually.</p>	<p>A watching brief is maintained.</p>		

Activity & Proposed management actions	Progress during 2005	Future timetable	Review of Management Action/Timescale etc.
<p>G10/ Motorised access to foreshores.</p> <p>Monitor existing management and review annually.</p> <p>Research links with other activities to target users.</p>	<p>Floodbank at Waters'Edge- motrobikes going onto foreshore to avoid new bike barrier</p>	<p>Continue monitoring</p>	
<p>G11/ Motorised recreation on the foreshores</p> <p>Research to establish list of targeted and vulnerable locations.</p> <p>Develop Code of Conduct to raise awareness of the impact quad biking/motor bikes can have on the interest features and ensure wide publicity.</p> <p>Action for F5 – consider as third party damage and the introduction of permits and bye-laws.</p>	<p>Identified by the Association of Police Officers/Joint Nature Conservation Council as one of their top 5 priorities.</p> <p>Lincolnshire Police and English Nature run regular joint patrols in the Donna Nook area. Over the past 2 years there have been about 50 official warning letters to suspected offenders to off-road vehicles users on the SSSI. To date Lincolnshire's Wildlife Crime Officer are not aware of any repeat offenders.</p>	<p>Continue current action.</p>	<p>Extend enforcement action to the Humberside area of the EMS.</p>

Activity & Proposed management actions	Progress during 2005	Future timetable	Review of Management Action/Timescale etc.
<p>G12/ Personal Water Craft</p> <p>Research to establish which locations need to be looked into in more detail.</p> <p>Develop a Codes of Conduct to increase awareness of the impact these water sports may have on the interest features and what actions they can take to reduce this.</p>	<p>Associated British Ports have placed signs on their slipways advising against public use.</p> <p>North East Lincolnshire Council have closed their slip ways to all except: Members of Cleethorpes Watersports Club and its associated organisations.</p> <p>The public can use the slip provided that they:</p> <ul style="list-style-type: none"> • give 48 hrs notice • have valid insurance certificate • a datatag or ID number • relevant proficiency certificate • proof of identity • and are equipped with the mandatory safety equipment 		

Activity & Proposed management actions	Progress during 2005	Future timetable	Review of Management Action/Timescale etc.
<p>G13/ Samphire collection</p> <p>Review on annual basis.</p> <p>Research/monitoring to establish which locations need to be looked into in more detail.</p> <p>Develop a Codes of Conduct to increase awareness of the impact samphire collection may have on the interest features and what actions they can take to reduce this.</p>	<p>Codes of Conduct produced.</p>		
<p>G14/ Seal watching</p> <p>Monitor existing management and review annually.</p>	<p>Lincolnshire Wildlife Trust organises volunteer wardens during the pupping season. Limited support is provided by Anglian Water who provided some high-visibility waterproof coats for the volunteers.</p>		

Activity & Proposed management actions	Progress during 2005	Future timetable	Review of Management Action/Timescale etc.
<p>G15/ Walking</p> <p>Research to identify localised areas where management action may need to be taken.</p> <p>Develop a Codes of Conduct to increase awareness of impact walking may have in certain locations and at certain times.</p>	<p>Waters' Edge Disturbance monitoring</p> <p>One or two new paths/path diversions- new access to floodbank in Barton/Barrow Clay Pits. Path diversion at Chowder Ness. Path diversions on Alkborough Flats.</p>		
<p>G16/ Wildfowling</p> <p>Promote existing Codes of Conduct and discuss the development of a general Code of Conduct for the site.</p> <p>Review wildfowling activity</p>	<p>The Humber Wildfowling Analysis is taking place, current work schedule:</p> <ul style="list-style-type: none"> • map current English Nature wildfowling consents • identify and map important high tide roosts • identify and map important refuge areas • identify and map other important areas, such as key arable fields, other areas used regularly by the estuary birds. 		
<p>G17/ Yachting and sailing</p> <p>Monitor existing management and review</p>	<p>Monitoring continues.</p>		

Activity & Proposed management actions	Progress during 2005	Future timetable	Review of Management Action/Timescale etc.
annually			

4.12 Science & Education – Annex H

Lead Author: English Nature – Emma Hawthorne, Humber Project Manager - Chris J Manning.

Activity & Proposed management actions	Progress during 2005	Future timetable	Review of Management Action/Timescale etc.
<p>H1/ Aerial surveys H2/ Archaeological surveys H3/ Bird and mammal surveys H4/ Fish/ shellfish surveys H5 Monitoring of fishing activity H6/ Geological surveys H7/ Geomorphological surveys</p>		<p>H8/ Habitat condition assessment H9/ Hydrographic surveys (Annex I) H10/ Sampling of intertidal and subtidal sediments by grab, coring, trawling etc. H11/ Invertebrate surveys/studies H12/ Monitoring of pollutant concentrations H13/ Seismic surveys H14/ Vegetation surveys</p>	
<p>H1 – H14 Above Surveillance (Maintain watching brief) by the organisations involved to ensure that there is no disturbance to the habitats or species of the EMS. Erection of notices on site, explaining the nature conservation importance of the site. Assessment of new activities if they are likely to cause significant effect.</p>	<p>Work included: WebS counts on high and low tides. Lamprey research Environment Agency led project with EN involvement and funding. Sediment and Invertebrates - EA, sampling programme. Monitoring inter- and sub-tidal monitoring in light of Water Frame Work Directive. Condition assessment and monitoring of Humber (SAC, SPA, Ramsar) scoping study are on hold due to EN staff shortages.</p>	<p>These and other projects are ongoing.</p>	<p>The reports are assessed and this determines the need for further action/research.</p>

Activity & Proposed management actions	Progress during 2005	Future timetable	Review of Management Action/Timescale etc.
Production of an English Nature's Humber Estuary leaflet, detailing the nature conservation importance of the site	No action pending the formation of Natural England		
H15/ Water sampling Surveillance (Maintain watching brief) by the organisations involved to ensure that there is no disturbance to the habitats or species of the EMS.	Undertaken by the Relevant Authorities as required.		
H16/ Fields trips universities/ Schools H17/Guided walks and activities			
H16 – H17 Above	HERAG have agreed to install signs subject to funding.	Project being developed in 2006.	

4.13 Shipping & Navigation – Annex I

Lead Author: Associated British Ports - Capt. Phil Cowing & Brian Nickson.

Development during 2005

At the Port of Immingham, construction of a £27.5m roll-on/roll-off facility and the £59.5m extension of the Humber International Terminal for the import of coal have been proceeding, these are scheduled to become operational in the first half of 2006. Both schemes were judged to result in the loss of habitat within the Humber European Marine Site and as part of the mitigation package ABP agreed to create additional habitats to replace that which will be lost. The work involved managed realignments at:

Chowder Ness, that after 10 years is predicted to create, 10.5hectares of mudflat 0.8 hectares of saltmarsh and 2 hectares of grassland.

Welwick that after 10 years is predicted to create, 7-37 hectares of intertidal mudflat, 8-32 hectares of saltmarsh and 9-15 hectares of grassland.

The new flood banks for both these schemes were completed during 2005, with the existing floodbanks due to be removed during 2006.

In addition; at Doig’s Sluice, the exiting sluice was close, allowing the natural infilling with estuary sediment that after 10 years is predicted to create 2-4 hectares of intertidal mudflat. An appropriately designed roosts will be installed at the western end of Quay 2005 to accommodate roosting birds displaced by the demolition of West Wharf the roost is due towards the end of the building period.

Activity & Proposed management actions	Progress during 2005	Future timetable	Review of Management Action/Timescale etc.
I1/ Spillages from vessels and harbour installations (Annex D11)	25 reports received during the year, including possible sightings of oil in the water. All spills were of a minor nature. A full update of Humber Clean will be completed.	February 2006.	Annually.
I2/ Spillage clear up operations	Humber Clean implemented.	As above.	

Activity & Proposed management actions	Progress during 2005	Future timetable	Review of Management Action/Timescale etc.
I3/ Maintenance of structures	Minor removal works at Spurn Jetty took place in 2005		
I4/ Movement of Floating Marks	South Shoal Buoy (North of Grimsby) was moved 1.5 cables north to widen the main navigation channel making it safer for passing traffic in this area.		
I5/ Discharge of effluents at sea (ships)	These are detailed in the harbour master's report, 2004 is most recent one available. These relate to very minor events 1x grounding and 3x pollution reports.		
I6/ Discharge of ballast water	Clean ballast water is permitted to be discharged in the Harbour Area. No instances of dirty ballast being discharged in 2005.		
I7/ Dock, port and marina development	Plans & projects are assessed under relevant legislation.		
I8/ Harrowing/ Ploughing/ Bed Levelling of river beds	Surveillance and survey Plough dredging undertaken at the following locations: Dock entrances at Hull – King George, Alexandra and Albert Docks. Also River Terminal 1 and Victoria Dock Basin, Hull, the dock entrances at Grimsby and Immingham, an EA outfall close to Albert Dock, Hull, Swinefleet Clough.		

Activity & Proposed management actions	Progress during 2005	Future timetable	Review of Management Action/Timescale etc.
I9/ Hydrographic Surveying	No further action	N/A.	N/A.
I10/ Sunk dredged channel I11/ Goole dock and dock entrance I12/ Dock Entrances I13/ River Humber I14/ Berths at North Killingholme (HST)		MAINTENANCE DREDGING PROTOCOL The Humber Maintenance Dredging Protocol is nearing completion and will be signed off in the first half of 2006. The Humber Baseline Document has been used to obtain renewal of the Humber Depositing Licences. Minor adjustments will be made before the protocol is signed. Off.	
I15/ Hull Marina	Future FEPA consents will reflect development of the Maintenance Dredging Protocol.		
I16/ Vessels transits	Continuous monitoring by VTS Humber.		
I17/ Navigation lighting	Continuous monitoring by VTS Humber.	Damaged or unreliable navigation marks are listed in the annual Harbours Master Reports available from April 2006. The Trinity House Lighthouse Service conducts an annual tour by launch and motor vehicle of all navigation marks on the Humber, Ouse and Trent. Defects are reported to the Harbour Master who arranges for the defects to be rectified by ABP.	
I18/ Smoke-stack emissions/engine operations	Regulated under MARPOL 1973/78.		

Activity & Proposed management actions	Progress during 2005	Future timetable	Review of Management Action/Timescale etc.
I19/ Tank Washings	Monitoring by Vessel Traffic Services - Not Allowed by statute.		
I20/ Discharge of liquid effluents	Monitoring by Vessel Traffic Services.		

4.14 Ministry of Defence - Annex J

Lead Author: Ministry of Defence – David Batchelor

The use of Flares that are part of the aircraft safety system is now recorded, these always drop in the sea. Rocket Projectiles were tested in May 2005, and have not been used since.

Activity & Proposed management actions	Progress during 2005	Future timetable	Review of Management Action/Timescale etc.
<p>J1/ Low flying fixed wing aircraft J2/ Military Helicopters J3/ Bombing and gunnery J4/ Weapons Clearance – (EOD) J5/ Military Target Repair</p> <p>Review Military activities including military aircraft usage, bombing and gunning, noise, weapons clearance and targetry</p> <p>Develop a Conservation Management Plan Action – MoD (Defence Estates) in consultation with EN and LWT.</p>	<p>Military activity is recorded in detail, i.e. including military aircraft usage, bombing and gunning, noise, weapons clearance and targetry.</p> <p>The Conservation Management Plan Action is under active development, with ongoing discussions taking place on the drafts between, MoD (Defence Estates), EN and LWT.</p>	<p>Ongoing.</p> <p>Complete during 2006.</p>	<p>Comprehensive data collected from 2000 to 2005.</p> <p>Conservation Management Plan to be finalised in 2006.</p>

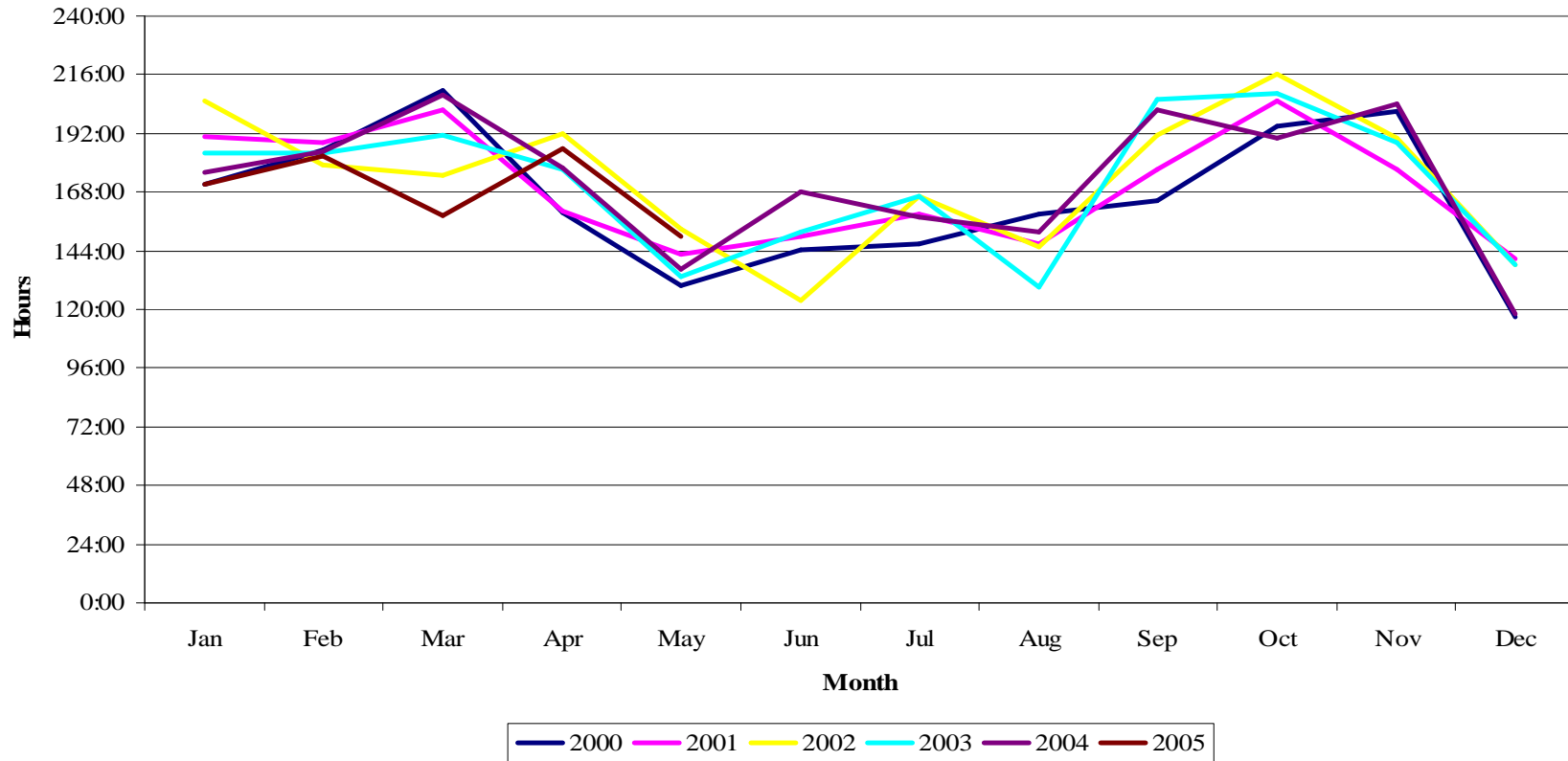
Activity & Proposed management actions	Progress during 2005	Future timetable	Review of Management Action/Timescale etc.
<p>J1/ - J5/ (Continued)</p> <p>Surveillance to assess impact of military helicopters on bird activities within the range.</p>	<p>A full Environmental Impact Assessment for the new Apache Helicopter is being undertaken. This will inform an assessment of the current helicopter impact on the EMS.</p>	<p>Ongoing.</p>	<p>Apply the new Apache Helicopter EIA to other helicopter use when it is completed.</p>
<p>J6/ Maintain /replace: warning flags/notices/buoys</p> <p>Monitor impact on pioneer saltmarsh</p> <p>Review transport routes used.</p>	<p>No new signs installed, existing tracks in use. High tides scoured site and removed some emergent vegetation during 2005.</p> <p>Continue to use existing routes to minimise impact</p>	<p>Ongoing.</p> <p>Ongoing.</p>	<p>Continue existing management.</p> <p>Continue existing management.</p>
<p>J7/ Visiting Rapier Units on Exercise</p> <p>Monitor abrasion to saltmarsh</p>	<p>Squadron based at Kirton Lindsey has been relocated and they use the Holbeach range.</p>	<p>Not currently relevant.</p>	<p>Review if activity is resumed on the EMS.</p>

Activity & Proposed management actions	Progress during 2005	Future timetable	Review of Management Action/Timescale etc.
<p>J7/ Visiting Rapier Units on Exercise (continued)</p> <p>Review areas used on exercise by Rapier units. To consider type of use and military need. To assess impact and to agree areas to be used wherever practical to minimise impact.</p>	<p>N/A</p>		
<p>J8/ Non-Military flying – Light aircraft (Annex G2)</p> <p>Continue dialogue with North Coates Airfield and flying clubs to highlight regulations, sensitive areas and explain impact they may have on EMS interest features, and encourage their membership of advisory groups.</p>	<p>Change in clubs old one relocated and a new one formed. EN has reminded them of their responsibilities.</p> <p>Low flying is a very occasional activity that is not considered to cause regular disturbance.</p> <p>It is an offence to enter the airspace when the range is in use. EN for other EMS has instigated a standard warning letter for microlights that cause disturbance. Plane numbers will be collected for action by EN when disturbance is observed.</p>	<p>Ongoing.</p> <p>Ongoing.</p> <p>Ongoing.</p>	<p>Continue monitoring.</p> <p>Continue monitoring.</p> <p>Continue monitoring and liaising with English Nature.</p>

Activity & Proposed management actions	Progress during 2005	Future timetable	Review of Management Action/Timescale etc.
<p>J8/ Non-Military flying – Light aircraft (Annex G2) (continued)</p> <p>Research low flying activity causing disturbance. Microlights have now moved from North Coates to Sam Holt.</p> <p>Promote letter of Agreement whereby Donna Nook controls all aircraft movements over the range from North Coates airfield. Develop network with conservation site managers to record incidents and establish method for estimating height and range of aircraft for use in the field.</p>	<p>As above.</p>		

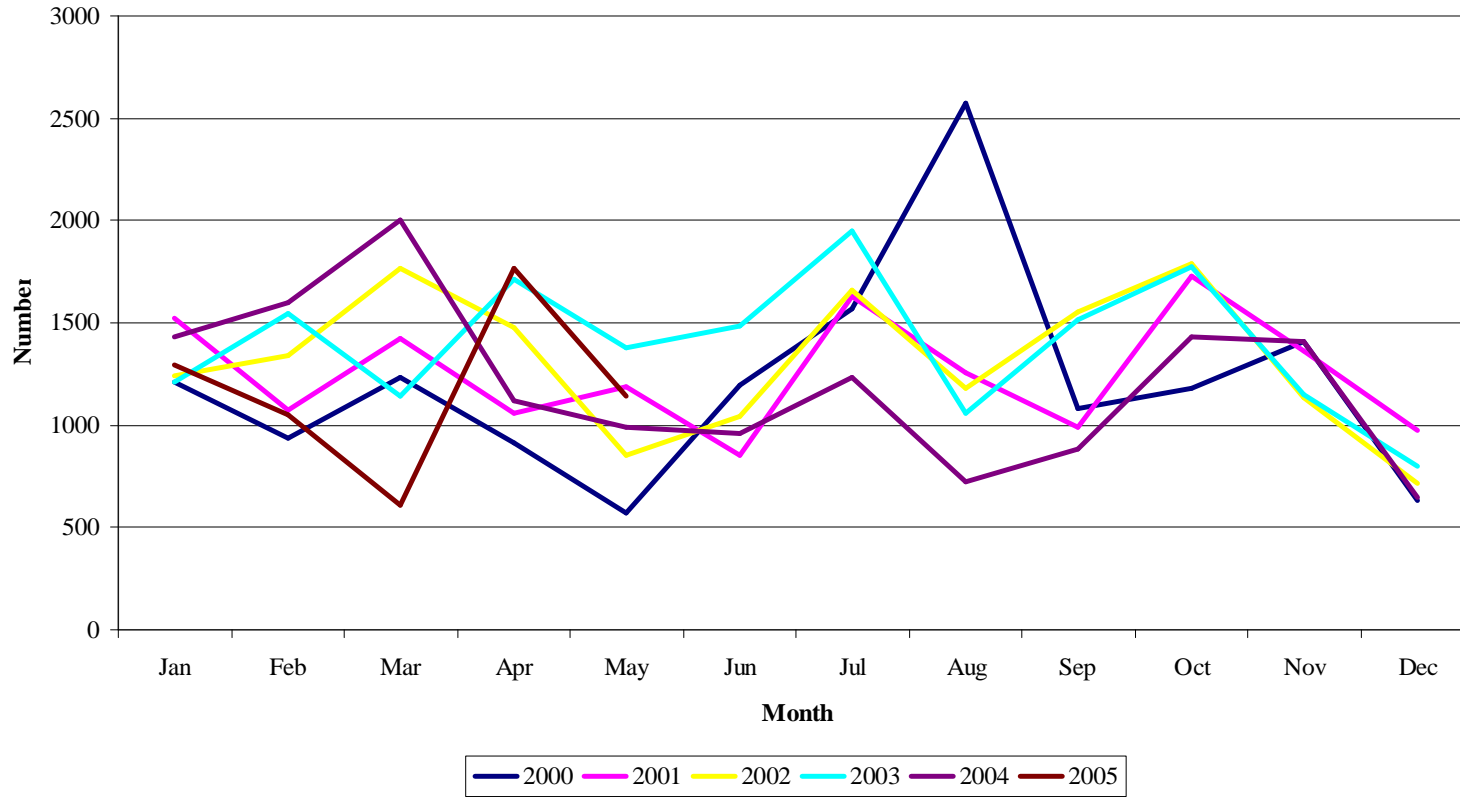
Summary, Military activity at Donna Nook 2000 – 2005.

Established Hours



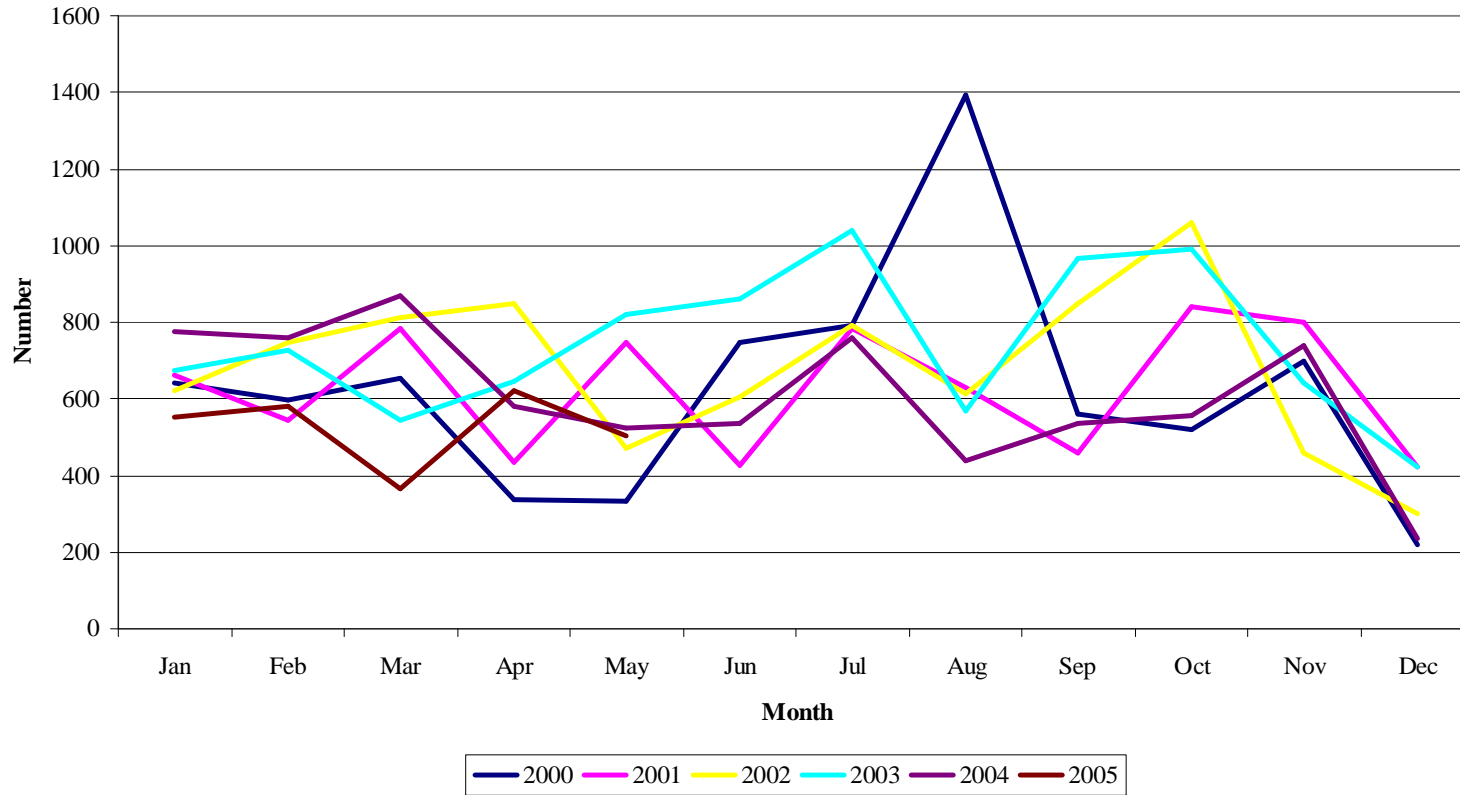
The number of 'Established Hours' per year averaged 1,846 (maximum 2,075 minimum of 848) over the survey period with a similar pattern of monthly usage over the years.

Passes to Targets



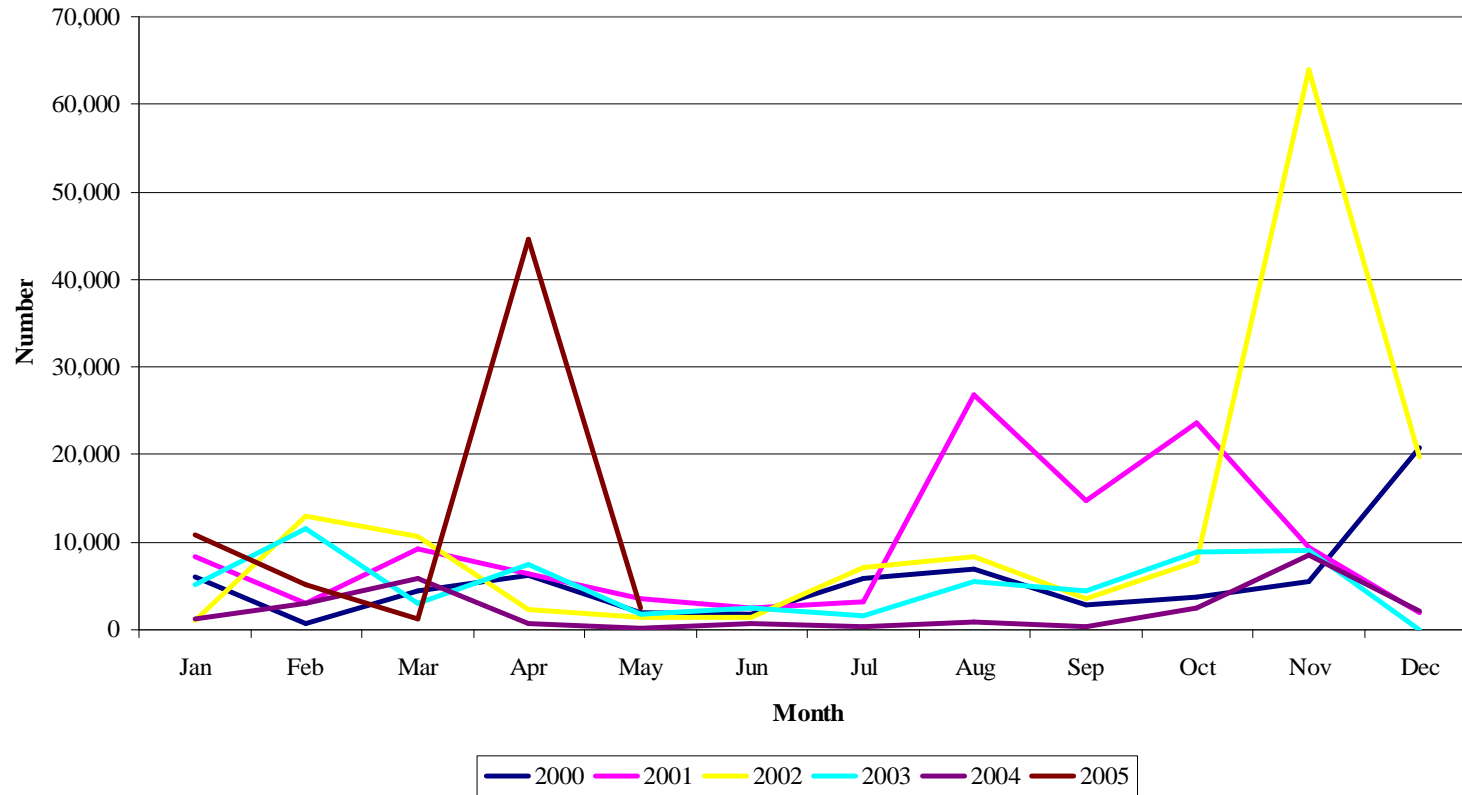
The number of passes to targets averaged 13,725 (maximum 16,734 minimum 5,859) with unusually high use in August 2000 and low usage in March 2005.

Bombs



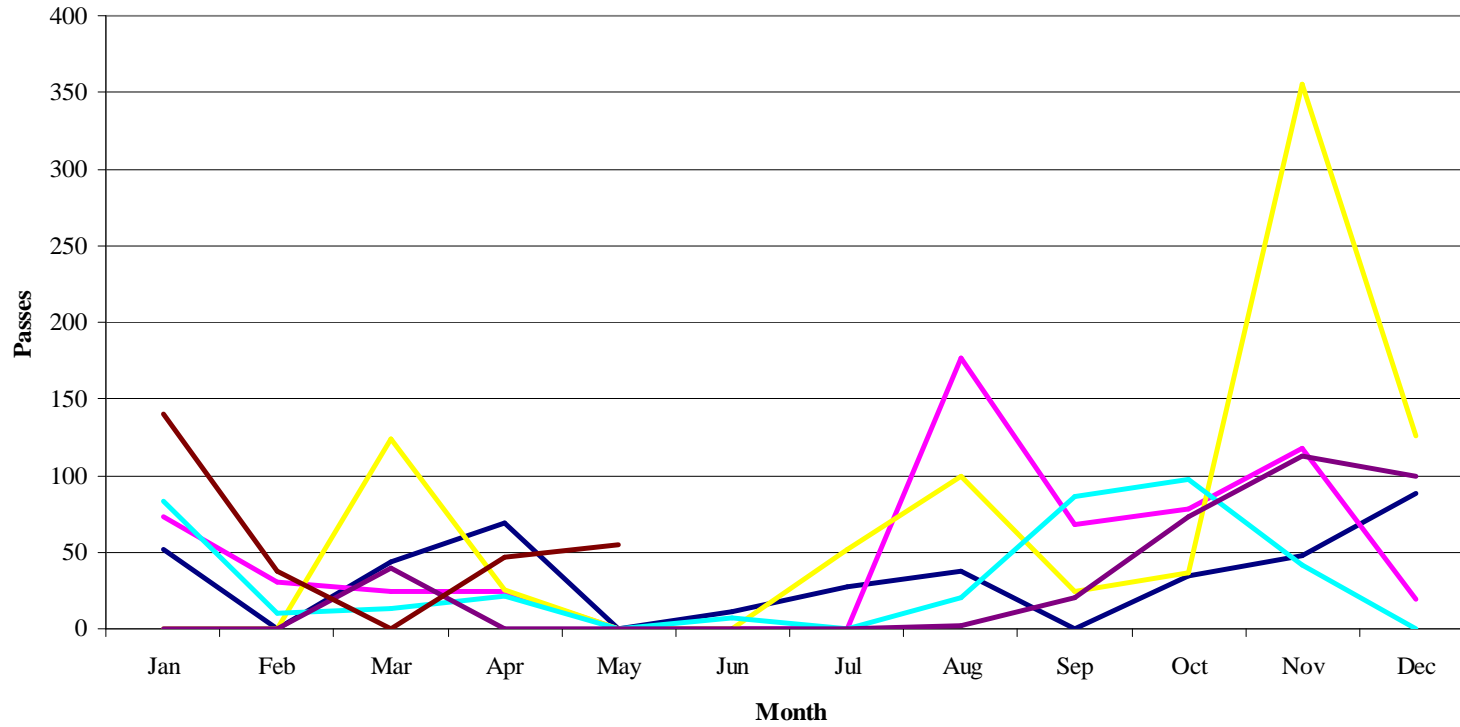
The number of Bombs used averaged 7,008 (maximum 8,901 minimum 2,625).

Rounds

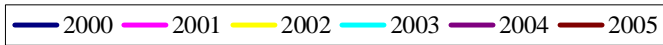


The number of Rounds used averaged 78,606 (maximum 140,342 minimum 26,392).

Helicopter Passes



Helicopter passes averaged 479 (maximum 842 minimum 280).



5. CONDITION & COMPLIANCE MONITORING

5.1 Condition Monitoring

The Humber Estuary SSSI has a total area of 37,000 hectares, for condition assessment purposes it is divided 185 units. The % in the various categories are:

	%
Area meeting PSA ³ target	97.35
Area in favourable condition	94.12
Area unfavourable recovering condition	3.23
Area unfavourable no change	0.20
Area unfavourable declining	2.45
Area destroyed / part destroyed	0.00

The main reason for unfavourable condition is costal squeeze with some areas also subject to inappropriate grazing, other reasons include:

Unit	Reason for Unfavourable Condition
42	Encroaching by gardens
120	Reedbed is drying out
124	Public access/disturbance
131	Game management (fishing)
133	Unconsented construction of fishing pegs
134	Public access/disturbance
135	Reed not vigorous in growth.
136	Unconsented fishing activity
151	Inappropriate scrub control
152	Illicit vehicles use
153	Illicit vehicles use

6. OPERATIONAL ISSUES

6.1 Signage

Regulation 33⁴ provides for marking the site, but does not make this a statutory obligation of an individual Relevant Authority. HERAG believe that appropriate signage is required to indicate the existence and extent the European marine site, both to secure compliance with the HMS Action Plan, and inform the public on the sites features. A project to secure funding and install the signs will be developed during 2006.

³ The Public Service Agreements target is for 95% of SSSI to be in favourable or unfavourable recovering condition by 2010.

⁴ Conservation (Natural Habitats & c.) Regulations 1994

6..2 Conservation Objectives

English Nature's interim advice published in April 2003 provides both the conservation objectives and advises on activities that may cause deterioration to the Humber Estuary. Currently English Nature's advice excludes parts of the River Trent that are included in the Special Area of Conservations and Ramsar citations. The Relevant Authorities intend to include these parts of the EMS within the Humber Management Scheme as soon as the advice is produced.

6..3 Humber Estuary Relevant Authorities Group (HERAG)⁵

6.4 HERAG Changes in Membership

Anglian Water, Paul Glass Environmental Standards Manager was replaced by Paul Hickey. Responsibility for the HERAG is now with Jo Everitt, Biodiversity & Heritage Compliance Officer.

Associated British Ports, Brian Nickson resigned as Chairman of HERAG and Humber Estuary Relevant Authorities Working Group at the meeting on 14th June 2005. Associated British Ports Harbours Master, Phil Cowing who was unanimously elected Chairman of both groups.

British Waterways, Jonathan Hart-Woods was replaced by Michelle Cumming.

Defra - Sea Fisheries Inspectorate, Mr R Thomasson was replaced by Mr Michael Parker in October 2004.

East Lindsey District Council, David Pocklington, was replaced by Darren O'Toole in October 2005.

East Riding of Yorkshire Council, Suzanne (Jevons) Lowe, was replaced by Tom FitzGerald, in September 2005.

English Nature, Kate Jennings was replaced by Emma Hawthorne in October 2005.

Grantham Brundell & Farran merged with JBA Consulting in November 2004. The merged companies formed the Shire Group of Internal Drainage Boards. David Patrick continues as their representative.

Humber Properties Ltd/Hessle Dock was removed from the list of Relevant Authorities on 16th June 2005 following a review of their status.

Ottringham, Preston and Skeffling Internal Drainage Boards. Mr J Chorlton retired in September 2005. The new clerks are:

Ottringham and Skeffling, IDB's, Ralf Ward, The Drainage Boards, c/o Frank Hill & Son, 18 Market Place, Patrington, HU12 0RB.

⁵ Note full minutes of meetings are available on the web site www.humberems.co.uk

Preston IDB, David Fullwood, Clerk to the Boards, Derwent House, Crockey Hill, York, YO19 4SR. Note David Fullwood was previously a Competent Authority for the Beverly & North Holderness Internal Drainage Board.

Trinity House Lighthouse Service. Anthony Porter was replaced by Mr Peter R Dow.

Winestead Internal Drainage Board. Following a review of the Board's area, Winestead was removed from the list of Relevant Authorities in December 2005.

6..5 HERAG Meetings and Programme of Work

Meeting were held on 14th June, and 7th December.

Business included:

- Application of the Environmental Information Regulations/Freedom of Information Act
- Launch of the Humber Management Scheme
- Arrangements for hosting HMS staff
- Codes of Conduct
- Financial report and budget
- HMS Constitution and Terms of Reference
- Humber Advisory Group activities
- Humber Biological Action Plan
- Implementation of the Humber Management Scheme
- Management Scheme signing up process
- Relevant Authority Status review
- Signage of the Humber Estuary
- Web Site & Ebb & Flow

6..6 HERAG Terms of Reference - revision

Revisions to the Terms of Reference were proposed to the Humber Estuary Relevant Authorities Group on 8th December 2004. The Terms of Reference require agreement by two thirds of the members and permitted postal votes. Voting papers were issued in January 2005, but didn't receive a conclusive vote. HERAG considered the hiatus on the 14th June and decided to reissue voting papers to the non-voting members, this time closing the vote after a further month.

The vote closed on 15th August with 25 votes cast, 24 for and 1 against with 0 abstentions. The vote was carried and the revised Terms of Reference implemented.

The revisions apply to section 2.4 that details the composition of the Working Group:

- Local authority delegates were reduced from two to one*
- Harbour Authority delegates were reduced from two to one*
- Internal Drainage Boards delegates were reduced from two to one*
- North Eastern Sea Fisheries Committee were replaced by the Humber Advisory Group Chair

* These representatives are now elected annually from within the Group, previously they were specified in the Terms of Reference. The changes also; detailed arrangements for delegates to organise alternative representation from within their “group” if they can not attend, and required Working Group agendas and minutes to be supplied to all Relevant Authorities instead issues a communiqué after each meeting.

HERAG drafted a constitution in 2005 that will be considered for adoption in 2006.

6..7 Humber Estuary Relevant Authorities Working Group (WG)⁶

6..8 WG Changes in Membership

Phil Cowing replaced Brian Nickson as chairman in June (see 6..4.)

6..9 WG Meetings and Programme of Work

Meeting were held on 26th April and 13th September.

Business included:

- Health & Safety/Insurance consideration for HERAG/HAG and staff
- Budget and contributions to HMS.
- Action Plan including a time-table, for 2005
- Implementation of the Humber Management Scheme

⁶ Note full minutes of meetings are available on the web site www.humberems.co.uk

6..10 Humber Advisory Group (HAG)⁷

6..11 HAG Changes in Membership

Humber Yawl Club, Mr Palmer (Humber Yawl Club south) and Mr Baggott (Humber Yawl Club south) have been replaced by Dave Mouncey who now represents both Clubs.

RSPB, Michelle Lindsay replaced Nicola Melville as their representative.

6..12 HAG Meetings and Programme of Work

Meeting were held on 17th March, 9th June and 15th September.

In addition to regular updates on the Humber Management Scheme and an opportunity for HAG to provide feedback, business included:

- Codes of Conduct, production and distribution
- Considering and responding to Publications; English Nature's "Our coasts and seas: Making space for people, industry and wildlife" and Defra's "Charting Progress: An Integrated Assessment of the State of UK Seas"
- Future work programme for HAG
- Insurance requirements s and possible changes to HAG's constitution
- Launch of the Humber Management Scheme, including HAG's involvement
- Promotion of the Humber Estuary/Management Scheme
- Classes of membership

Two meetings concluded with illustrated talks:

Giles Bartlett of North Eastern Sea Fisheries Committee on the implementation of fishing issues on the adjacent Flamborough European Marine Site.

Philip Winn of the Environment Agency on The Humber Flood Risk Management Strategy.

Clare Langrick of the Humber Environmental Data Centre on the needs and development of the data centre.

⁷ Note full minutes of meetings are available on the web site www.humberems.co.uk

7. FINANCE AND OPERATION

7.1 Financial Report

Invoices for contributions of £34,298 as agreed at the HERAG meeting in December 2004 were issued in April 2005, all contributions and arrears were collected during the year.

7.2 Review of Contributions

Historically, not all Relevant Authorities have contributed to the Humber Management Scheme. Previously this was not an issue, due to generous contributions from some Relevant Authorities during the Management Schemes development. The Management Scheme is now operational with HERAG agreeing “in principal” that all RA should contribute to the Humber Management Scheme’s budget. HERAG recognises the difficulty in apportioning contributions between Relevant Authorities, and constructive discussions were undertaken.

The Habitats Regulations⁸ require that all Relevant and Competent authorities with responsibilities in the marine site shall exercise their duties to meet the requirements of the Habitats Directive. This requirement is additional to any requirements or duties contained with in other legislation that may include Relevant Authority interaction, including the payment of fees/licenses.

Mechanisms to secure funding are not designated in the legislation, although advised in official guidance. Currently 21 Relevant Authorities contribute financially to the Humber Management Scheme and 14 don’t.

8. References

Associated British Ports, 2005. **Harbour Master's Report 2004**, Humber Estuary Services.

Bowles Green Limited, 2005. **North Lincolnshire Coast Eco-tourism Feasibility Study**, Consultants’ Report commissioned by English Nature.

Environment Agency, 2005. **Humber Flood Risk Management Strategy**, Environment Agency.

SQW Ltd, 2004. **Developing Regional Polices for Sustainable Tourism in Yorkshire & the Humber** http://www.yhassembly.gov.uk/p_contentDocs/460_1.pdf

Walsh, R. 9th Nov 2005. **Ouse Could Be Major Salmon River**, Environment Agency, <http://www.environment-agency.gov.uk/news/1213663?lang=e®ion=&projectstatus=&theme=&subject=&searchfor=&topic=&area=&month=>

⁸ The Conservation (Natural Habitats, &c) Regulations 1994.